

Installation notes / Sparcraft Bowsprit

1. Kit components / Tools needed for assembly

List of standard kit components



- section with central collar & end fittings
- 2 working deck plates + 4x M8 screws + reinforcing plates



- 1 parking deck plate + 1x M10 screw + round reinforcing plates

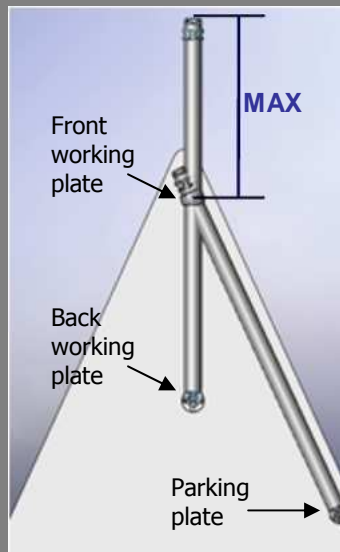


List of needed tools for assembly



- drill
- BTR 5 & 6 allen keys
- Ø8.5 & Ø10.5mm drill bits
- chamfer mills
- torque driver (socket drive Ø 10.7 & Ø13mm)
- silicone

2. Assembly drawing (example) / Marking the maximum outside length



Maximum outside length :

Ø bowsprit section	Longueur utile maximum
70mm	800mm
80mm	900mm
90mm	950mm
100mm	1000mm

Maximum sail area

Boat length	Ø bowsprit section	max asymmetric Spinnaker area	Max Gennaker area*
25'-36'	70mm	60m ²	37m ² *
36'-40'	80mm	82m ²	52m ² *
40'-47'	90mm	102m ²	65m ² *
48'-57'	100mm	130/150m ² *	105m ² *

Marking the maximum outside length (see chart against)

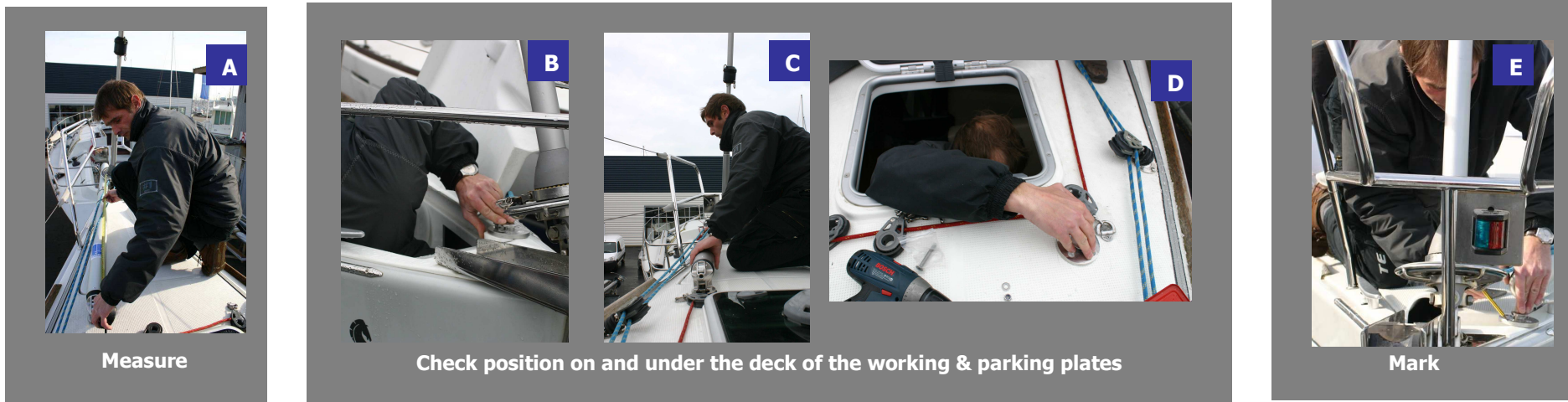


Measure

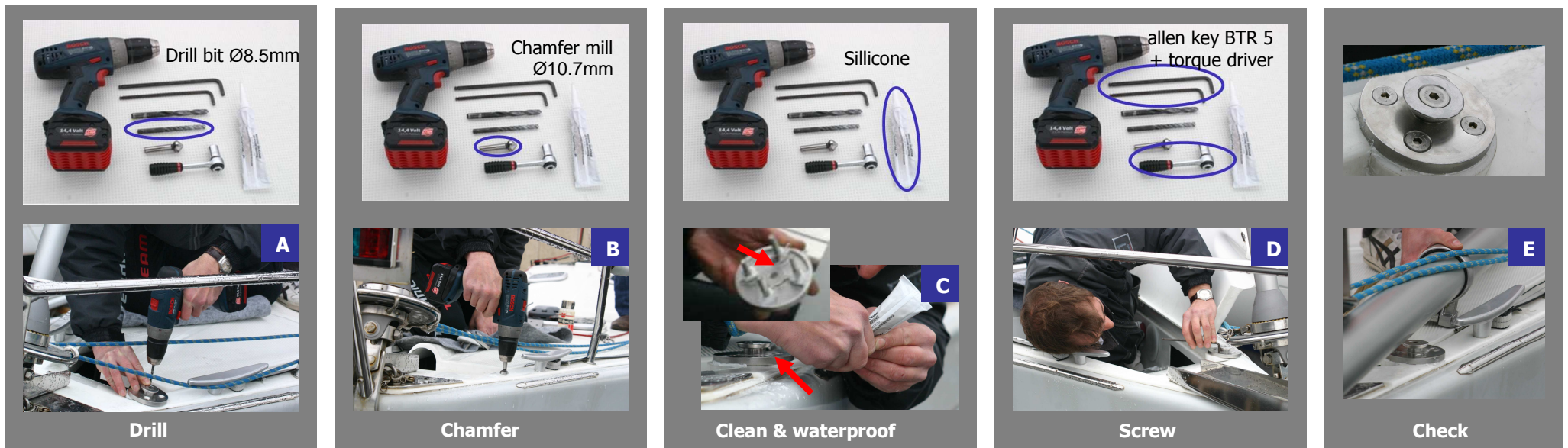


Mark with sellotape

3. Measure on deck and under deck to valid bowsprit position



4. Fixing the front working plate



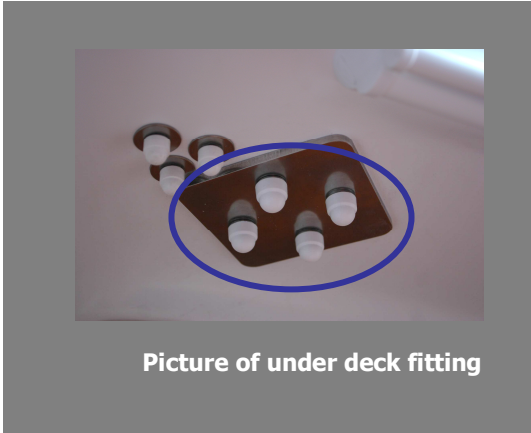
5. Fixing the back working plate (same instructions as the §3.)

6. Fixing the parking plate

<p>Drill bit Ø10.5mm</p>	<p>Chamfer mill Ø13mm</p>	<p>Silicone</p>	<p>allen key BTR 6 + torque driver</p>	
<p>A</p>	<p>B</p>	<p>C</p>	<p>D</p>	<p>E</p>
<p>Drill</p>	<p>Chamfer</p>	<p>Clean & waterproof</p>	<p>Screw</p>	<p>Check</p>

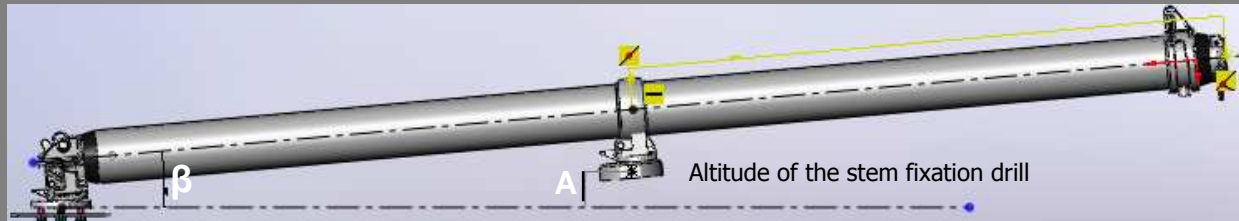
7. Installation is over (example on boar of an First 36.7)

<p>Working position</p>	<p>Parking position</p>

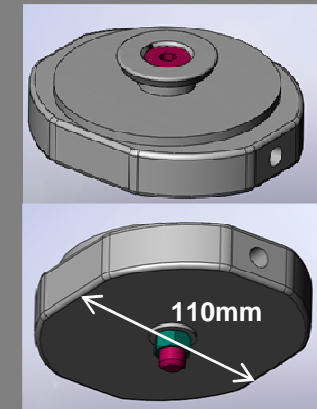


8. Options et accessories

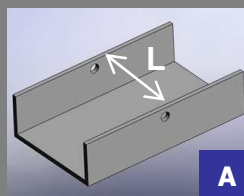
Stem adaptation option



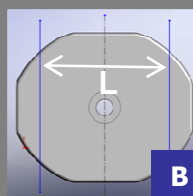
	BDH 70	BDH 80	BDH 90	BDH 100
Outside length	800mm	900mm	950mm	1000mm
β = maximum angle	5°	5°	3.15°	3.15°
A = Altitude of the stem fixation drill	38,5mm	53,5mm	28mm	31mm



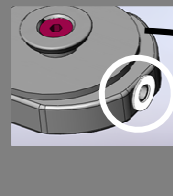
Stem plate delivered pre-fitted



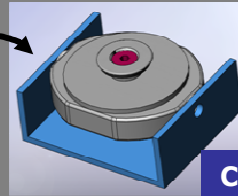
Measure



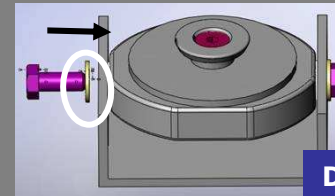
Cut



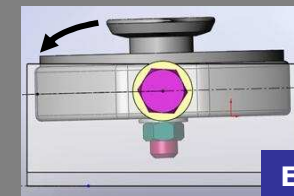
Position



Screw



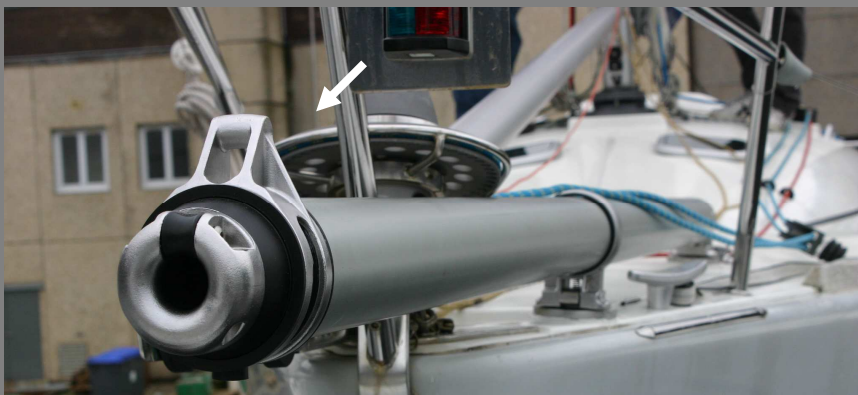
Lean



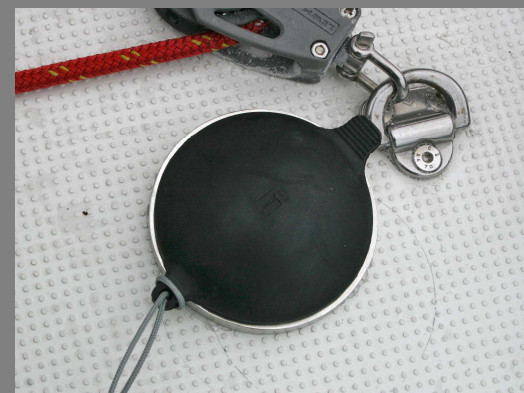
Secure

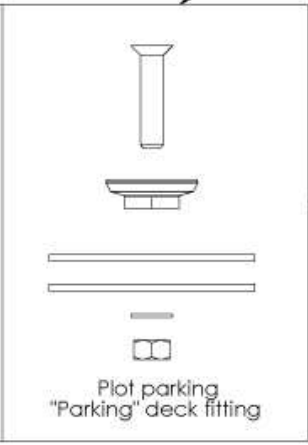
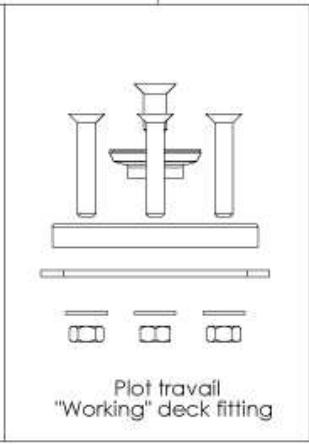
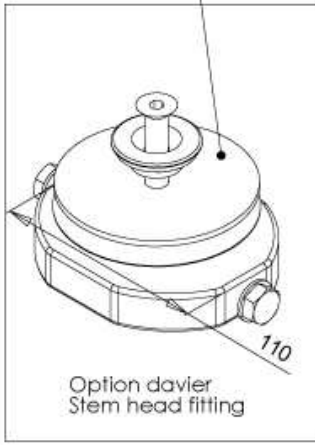
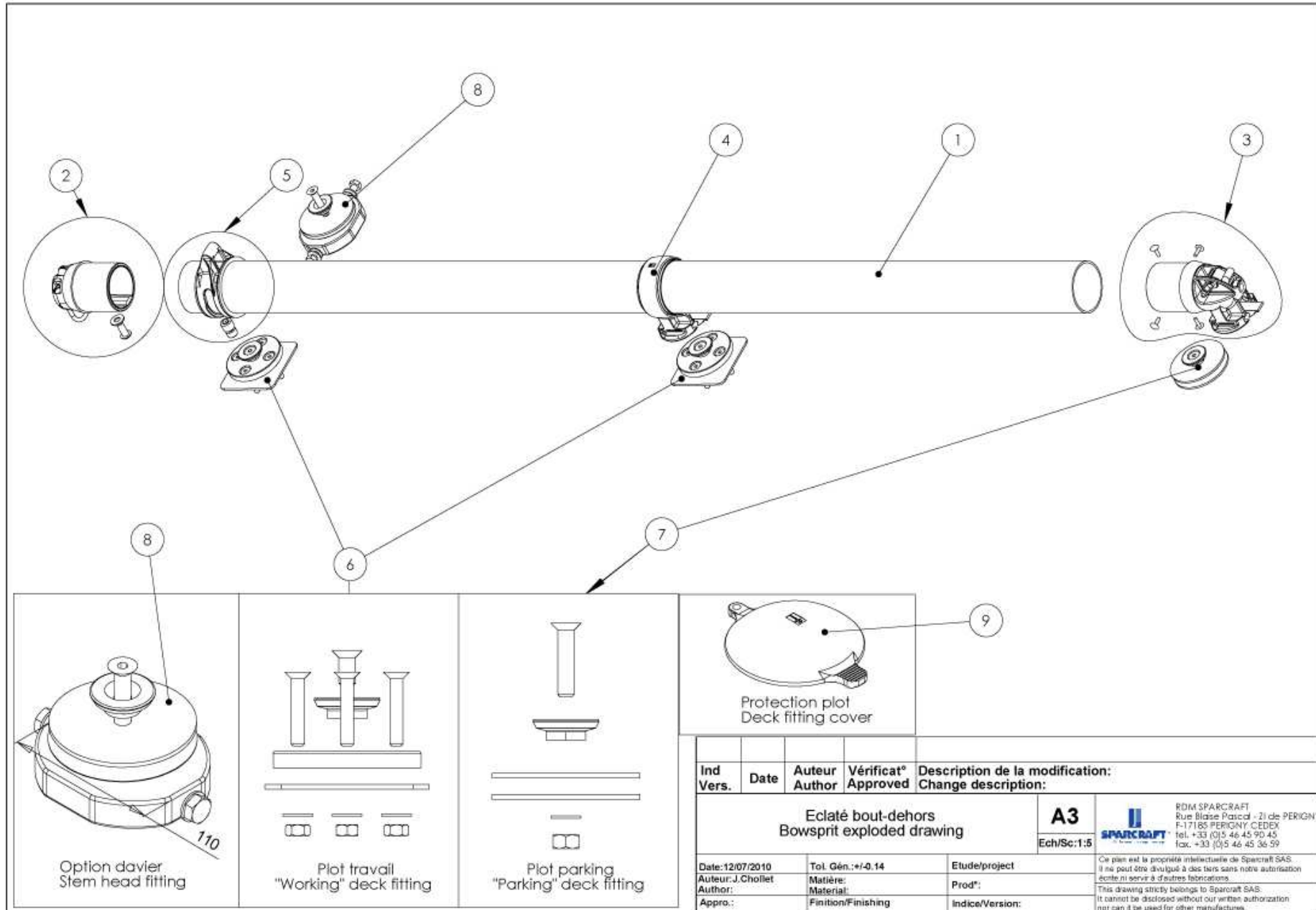
Nota: It is possible to fit extra plate underneath the back working plate in order to make it higher.

Option for fitting the Gennaker/Code Zero/Asymmetric Spinnaker furler



Accessory : plate cover





Ind Vers.	Date	Auteur Author	Vérificat° Approved	Description de la modification: Change description:
Eclaté bout-dehors Bowsprit exploded drawing				A3
				Ech/Sc:1:5
Date:12/07/2010	Tol. Gén.:+/-0.14	Etude/project		<small> Ce plan est la propriété intellectuelle de Sparcraft SAS. Il ne peut être divulgué à des tiers sans notre autorisation écrite ni servir à d'autres fabrications. This drawing strictly belongs to Sparcraft SAS. It cannot be disclosed without our written authorization nor can it be used for other manufactures. </small>
Auteur:J.Chollet	Matière:	Prod°:		
Appro.:	Finition/Finishing	Indice/Version:		

RDM SPARCRAFT
Rue Blaise Pascal - 21 de PERIGNY
F-17155 PERIGNY, CEDEX
tel. +33 (0)5 46 45 90 45
fax. +33 (0)5 46 45 36 59

